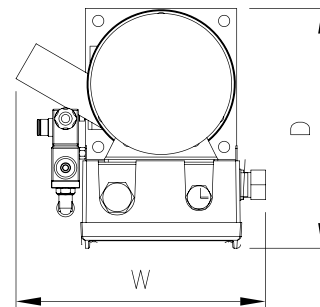
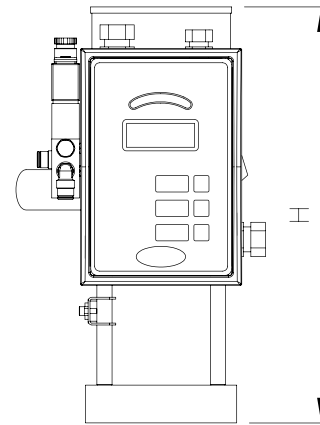
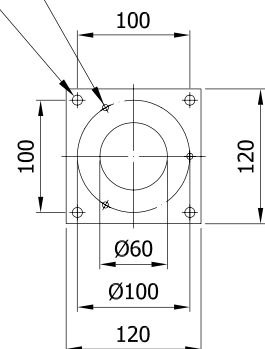


The compressed-air feeder of the VLV series is designed for small throughputs up to 20-30 kg/h. It is completely made of anodized aluminium and its Pyrex body is equipped with an adjustable level sensor. The VLV feeder comes complete with a high-efficiency suction probe. It can be installed directly on a machine or on a small storage hopper.



N.3 HOLES Ø5.5

N.4 HOLES Ø9



| TECHNICAL DATA    |                 | VLV         | VLV-PF      |
|-------------------|-----------------|-------------|-------------|
| Capacity          | dm <sup>3</sup> | 1           | 1           |
| Suction capacity  | kg/h            | 30          | 30          |
| Material inlet    | mm              | 32          | 32          |
| Voltage/Frequency | V/Hz            | 230/50-60   | 230/50-60   |
| Dimensions WxDxH  | mm              | 190x294x330 | 246x202x300 |
| Weight            | kg              | 5           | 5           |